

Performance

Rated capacity	8,000 kg @ 600 mm Load Center
Max. lifting height (stabilisers fully extended)	39 m
Capacity at max. height (stabilisers fully extended)	2300 kg
Turret Rotation	360° (Continuous)
Max. speed	40.0 km/h

Stabilisers

Type	Telescopic scissors
Stabilization system	Ground pressure detection. Automatic levelling. Lifting capacity adjusted in proportion to stabiliser extension

Weights

Weight (unladen)	24000 kg
------------------	----------

Engine

Make / Model	Volvo TAD 583 VE
Compliance	Stage V
Rated power (ISO 14396)	175 kW (238 hp) @ 2,300 rpm
Maximum torque	975 Nm @ 1,380 rpm
Number of cylinders	4.0
Displacement	5.13 L

Hydraulic System

Pump type	Load Sensing pump
Relief valve pressure setting	350.00 bar
Control valve (boom and turret)	Electro-proportional with flow sharing

Drive System

Transmission	Hydrostatic with electronic regulation / 4 wheel drive
Main drive	Electronically controlled variable displacement pump. Variable displacement motor. 2-speed gear box

Traction

Standard tyres	445/65 R22,5
Towing force	152.00 kN
Gradeability	65.00 %

Axles and brakes

Axle type	Oil-immersed axles with planetary gears
Rear axle	Oscillating and steering with hydraulic locking
Front axle	Oscillating and steering with levelling +/-8°
Service brake	Hydraulically operated wet multi-disk brakes on each axle
Parking brake	Hydraulic with negative action

Steering

Steering modes	3 steering modes with semi-automatic wheel realignment. 2 wheel steering / 4 wheel steering / Crab-steer
External turning radius (with forks)	4 m

Fluid Capacities

Fuel tank	270.00 L
Adblue	40.00 L
Hydraulic reservoir	220.00 L
Engine oil	16.00 L
Coolant	40.00 L

Environmental

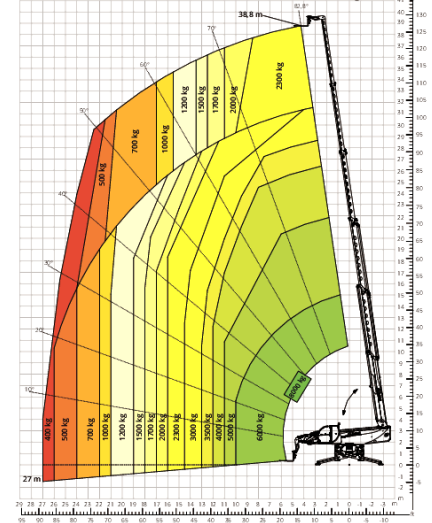
Operator noise level (LpA) (En 12053)	72 dB(A)
Level of acoustic power (LWA)	108 dB(A)
Whole body vibration (ISO 2631-1):	0.58 ms ⁻²
Hand-arm vibration (ISO 5349-1)	0.85 ms ⁻²

Standards

Standard compliance	EN 1459-2: slewing variable-reach trucks. EN 13000: hydraulic cranes. EN 280: mobile elevating work platforms. FOPS/ROPS cabin. EU 2016/1628: engine emissions
---------------------	--

Load Chart

FULLY EXTENDED STABILISERS (360°)



Dimensions - mm

