

Performance

Rated capacity	6,000 kg @ 600 mm Load Center
Max. lifting height (stabilisers fully extended)	22 m
Capacity at max. height (stabilisers fully extended)	4000 kg
Turret Rotation	360° (Continuous)
Max. speed	40.0 km/h

Stabilisers

Type	Scissor stabilisers with single telescopic extension
Stabilization system	Ground pressure detection. Automatic levelling. Lifting capacity adjusted in proportion to stabiliser extension

Weights

Weight (unladen)	19100 kg
------------------	----------

Engine

Make / Model	DEUTZ TCD 3.6 L4
Compliance	stage V
Rated power (ISO 14396)	100 kW (136 hp) @ 2,200 rpm
Maximum torque	500 Nm @ 1,600 rpm
Number of cylinders	4.0
Displacement	3.60 L

Hydraulic System

Pump type	Load Sensing pump
Pump capacity	130.00 L/min
Relief valve pressure setting	350.00 bar
Control valve (boom and turret)	Electro-proportional with flow sharing

Drive System

Transmission	Hydraulic
Main drive	Electronically controlled variable displacement pump. Variable displacement motor. 2-speed gear box

Traction

Standard tyres	445/65 R22,5
Towing force	68.00 kN
Gradeability	34.00 %

Axles and brakes

Axle type	Axles with planetary gearboxes
Rear axle	Oscillating and steering with hydraulic lock
Front axle	Oscillating and steering with levelling, +/-8°
Service brake	Hydraulically operated wet multi-disk brakes on each axle
Parking brake	Hydraulic with negative action

Steering

Steering modes	3 steering modes with semi-automatic wheel realignment. 2 wheel steering / 4 wheel steering / Crab-steer
External turning radius (with forks)	4 m

Fluid Capacities

Fuel tank	240.00 L
Adblue	10.00 L
Hydraulic reservoir	130.00 L
Engine oil	9.00 L
Coolant	20.00 L

Environmental

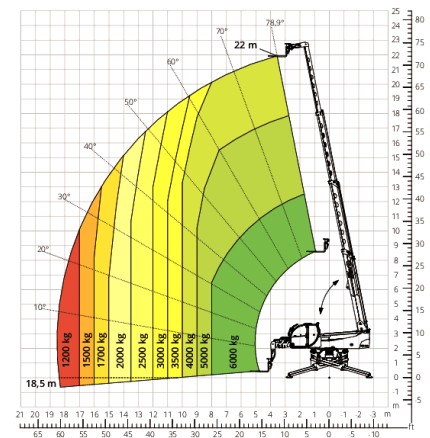
Operator noise level (LpA) (En 12053)	72 dB(A)
Level of acoustic power (LWA)	106 dB(A)
Whole body vibration (ISO 2631-1):	0.49 ms ⁻²
Hand-arm vibration (ISO 5349-1)	0.57 ms ⁻²

Standards

Standard compliance	2006/42/EC: EU Machinery Directive 2016/1628: EU Regulation on the emissions of stage V engines EN 1459-X: Relating to standards on the safety requirements for variable reach machines EN 280/EN 280-1/EN 280-2: standards relating to mobile elevating work platforms (if available) ROPS/level 2 FOPS: relating to the standards for protective structures
---------------------	---

Load Chart

FULLY EXTENDED STABILISERS (360°)



Dimensions - mm

